

North America Power Distribution

PDlink is the next generation of power and signal distribution designed to deliver a truly unified and modular interconnection system. Leveraging decades of experience and innovation, Link combines LK connectors, **eurocable** hybrid signal and power cables to offer a unified line of 19" high density rack mounted units for power, data, audio, speaker, and video distribution.

Constructed with heavy duty, yet lightweight aluminium, the main and branch units support a number of standard configurations suited for amplifier, FOH, and video racks. The Socapex compatible 6 circuit units integrate seamlessly with your existing lighting distribution to easily extend power for peripheral equipment racks.

All PDlink breakers are magnetic/hydraulic rated for full load in the harshest of conditions. Panels are clearly labelled and can be custom labelled at a minimal additional cost.

Standard PDlink units are designed to perfectly integrate with the DGLink Ethernet and signal distribution systems and can also be custom designed on request. Contact us to learn about PDlink. It can be offered as an OEM solution, or designed for your specific touring needs.



Free standing robust portable enclosure to fit most 19" rack configurations

100% Magnetic / Hydraulic Breakers, unaffected by heat

Web based monitoring and remote control options

Modular flexible design

Integrating power with audio, DMX, Ethernet, and video signals

Durable, smear resistant power coat finish with high-contrast labeling

Custom configurations available

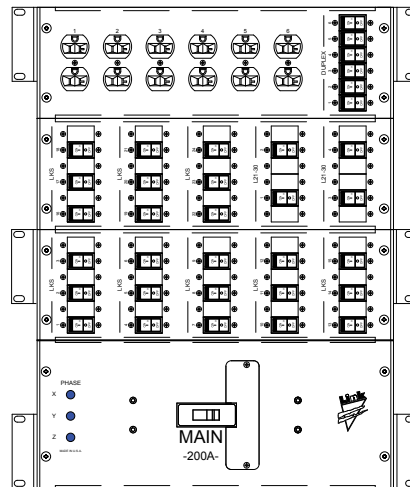
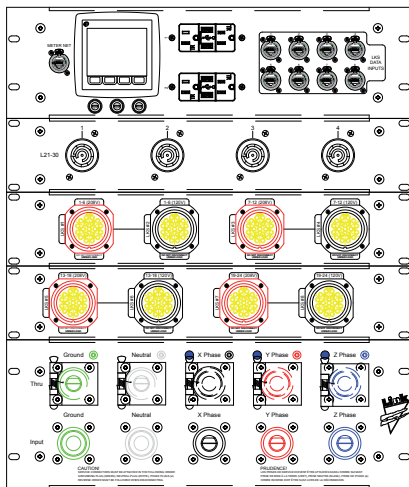
Advanced, and road proven mechanical and electrical design

USA, European, MEA Configurations with Listings



PDlink Standard Lighting Power Distribution

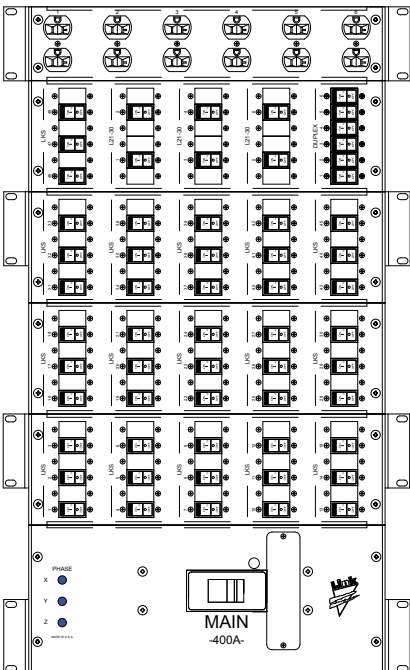
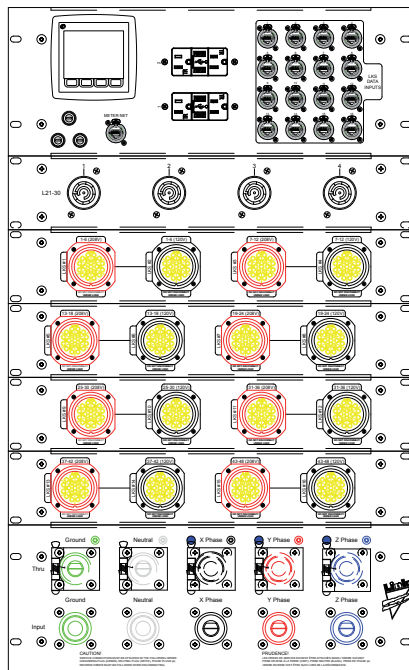
Lighting - Small



Small Lighting Distro

- 200 Amp Main Input
- Cam-lock In and Through
- Digital Multi-Function Power Meter- Network Output
- 4x Sets of LKS Data 120/208V Outputs - Shared 2 Pole Breakers
- 4x L21-30 Outputs
- 8x Edison Duplex Outputs

Lighting - Large



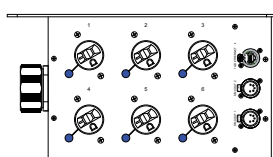
Large Lighting Distro

- 400 Amp Main Input
- Cam-lock In and Through
- Digital Multi-Function Power Meter- Network Output
- 8x Sets of LKS Data 120/208V Outputs - Shared 2 Pole Breakers
- 4x L21-30 Outputs
- 8x Edison Duplex Outputs

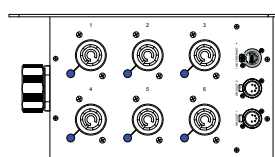
PDlink LKS Data Portable Breakout Distribution

Full range of options available with different connectors and configurations. Standard and stocked shown.

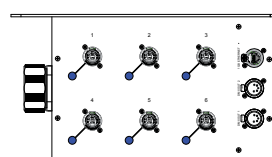
Edison



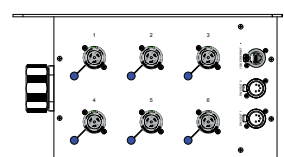
L6-20



PowerCON

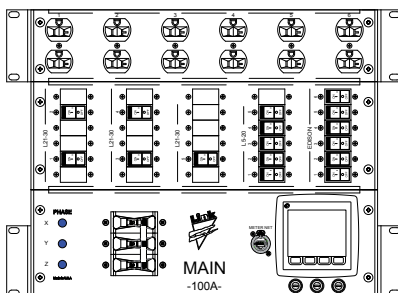
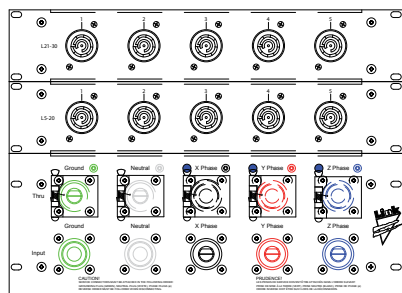


PowerCON True1



PDlink Standard A/V Power Distro

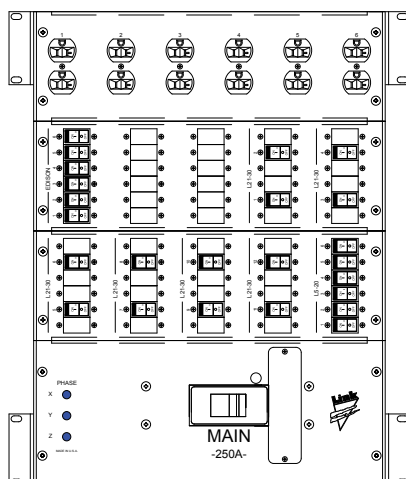
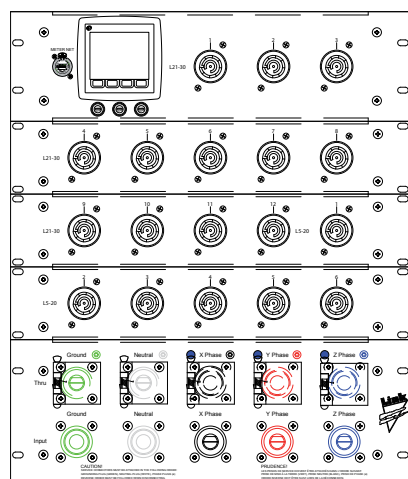
A/V Distro - Small



Small A/V Distro

- 100 Amp Main Input
- Cam-lock In and Through
- Digital Multi-Function Power Meter - Network Output
- 5x L21-30 Outputs
- 5x L5-20 Outputs
- 6x Edison Duplex Outputs

A/V Distro - Large



Large A/V Distro

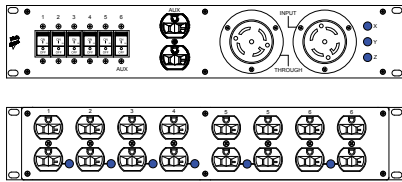
- 250 Amp Main Input
- Cam-lock In and Through
- Digital Multi-Function Power Meter - Network Output
- 12x L21-30 Outputs
- 6x L5-20 Outputs
- 6x Edison Duplex Outputs



PDlink Rack Distro

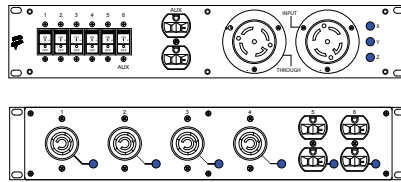
Full range of options available with different connectors and configurations. Standard and stocked shown.

RL 2U6D 8EE



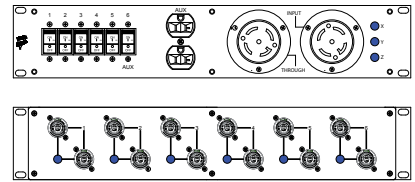
- L21-30 Input and Through
- 8x Edison Outputs on 6 Circuits

RL 2U6D 4BB2EE



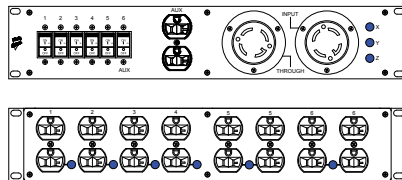
- L21-30 Input and Through
- 4x L5-30 Outputs on 4 Circuits
- 2x Edison Outputs on 2 Circuits

RL 2U6D 12GG



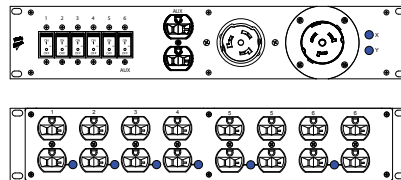
- L21-30 Input and Through
- 12x PowerCON Outputs on 6 Circuits

RL 2U6C 8EE



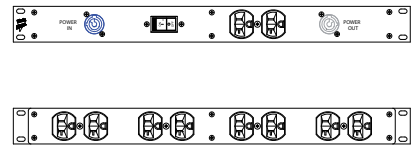
- L14-30 Input and Through
- 8x Edison on 6 Circuits

RL 2U6E 8EE



- 50A 125/250V Input and Through
- 8x Edison on 6 Circuits

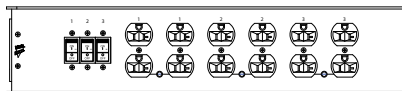
RL 1U1G 5EE



- PowerCON Input and Through
- 5x Edison on 1 Circuit

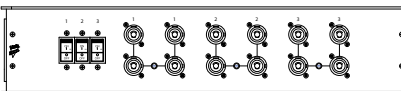
PDlink Portable Power Distro

RL P 3D 6EE



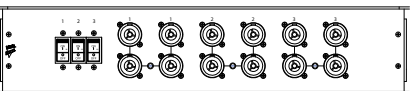
- L21-30 Input and Through
- 6x Edison on 3x20A Circuits

RL P 3D 12GG



- L21-30 Input and Through
- 12x PowerCON on 3x20A Circuits

RL P 3D 12HH



- L21-30 Input and Through
- 12x True 1 on 3x20A Circuits



PDlink Fixed Speed Chain Motor Control

PDlink Chain Motor Control is the culmination of years of real world development leveraging decades of experience and innovation. Working with our OEM partners Link combines LK Connectors, **eurocable** hybrid signal and power cables to offer a unified line of controllers whether you need 2 or 128 motors!

These units include advanced features such as the ability to sense and change the phase order remotely from the pendant by a certified operator with a key-switch. Additionally the control pendant features large, brightly lit up/down toggles, a highly flexible and durable **eurocable** control extension, and reliable analog controls that can be used up to 1500 feet.

Working closely with our OEM partner in addition to standard offerings we've also developed a specialty unit intended for large-scale rigging situations that is truss mountable into any size truss 12x12" and up, and features an LK Connectors LKH 28A-9 multipin allowing for 60 amps of total power; more than enough power to run 8x 2-ton motors simultaneously.

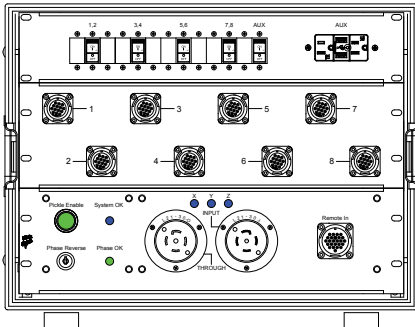
Standard PDlink Chain Motor Controllers units are available in a wide range of physical formats using a variety of power input options such as L21-30, "California Twist" 50 amp, the LKH 28A-9, connector and Cam-Locks. Output options include "dual twist" NEMA connectors, dual pin and sleeve connectors, and the industry standard P7, P14, and C7 multipins as part of our LKR series of connectors.

- Developed with leading entertainment rigging company
- Physical Formats Include Flight Cases, Truss Mountable, and "Suite Case"
- Multi-pin Power Inputs up to 80A allowing 8x 2-Ton Motors
- Use of Industry Standard LK Connectors for remotes and hoists
- Reliable Analog Remote Control with max distance over 1500 feet
- Large, bright up/down switches easily operated even with gloves on!
- Remote Phase Sense and Switch from pendant controller
- Easily Replaceable Mechanical Control Relays
- Installation Versions Available
- ETL Listed

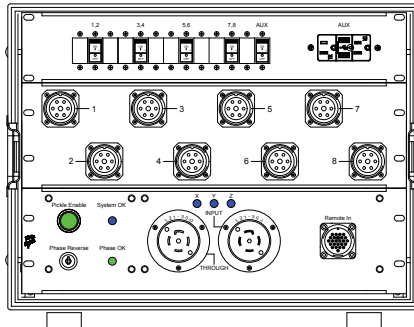


PDlink Fixed Speed Chain Motor Control

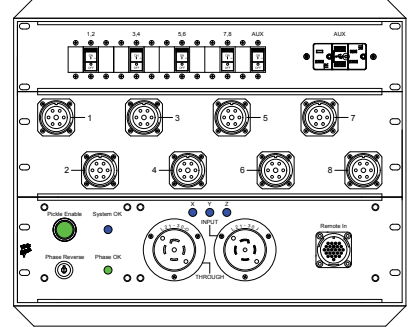
ML F4D 8AA1U



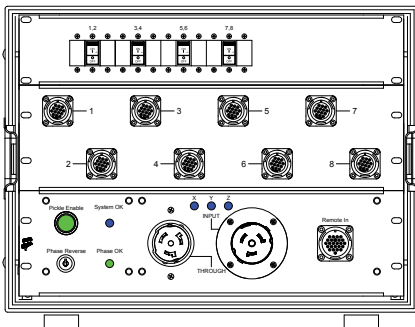
ML F4D 8CC1U



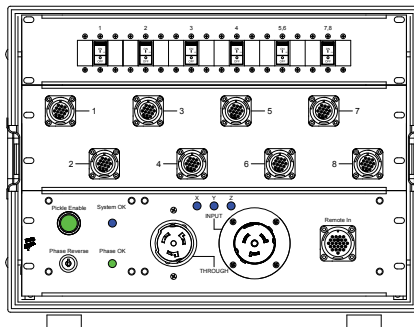
ML S4D 8CC1U



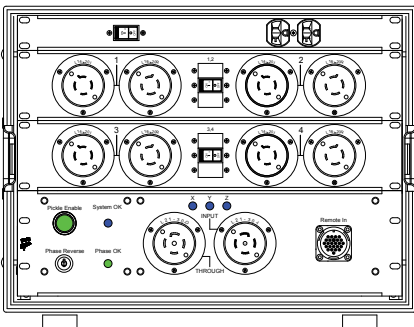
ML F4F 8AA



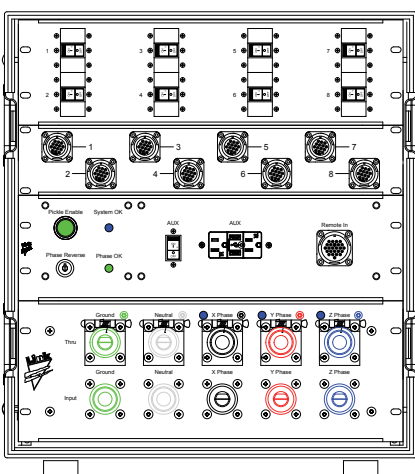
ML F6F 8AA



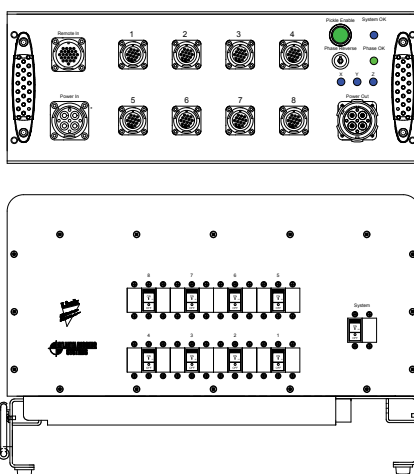
ML F2D 4EEU



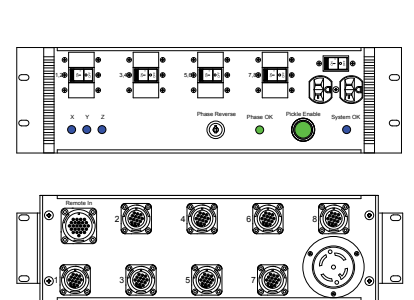
ML F8V 8AA1U



ML T8T 8AA



ML R4D 8AA1D



ML R1D 2CC

